



Draw Near
Pray Counterintuitively



Draw Near

PRE TEST



Draw Near

#1

I can think of someone I hate, have hated in the past, or someone who annoys me.



Draw Near

#2

“Loving your enemy,” “doing good to those who hate you,” and “blessing those who curse you” are bizarre instructions.



Draw Near

#3

**There is a difference between hearing
and listening.**



Draw Near

#4

I am a follower of Jesus.

Luke 6:27-31

**²⁷ “But to you who are listening I say:
Love your enemies, do good to those
who hate you, ²⁸ bless those who curse
you, pray for those who mistreat you.**

Luke 6:27-31

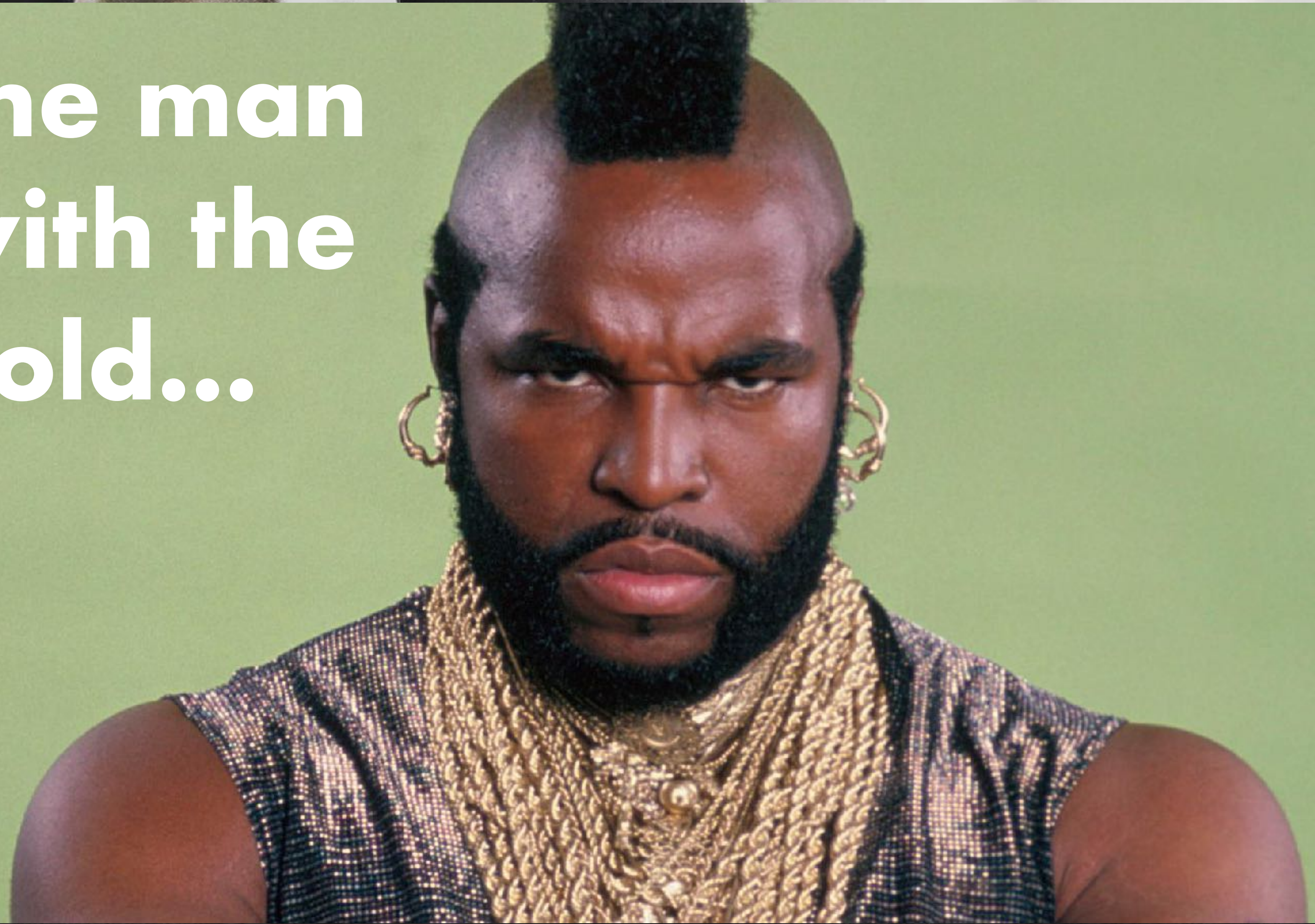
²⁹ If someone slaps you on one cheek, turn to them the other also. If someone takes your coat, do not withhold your shirt from them. ³⁰ Give to everyone who asks you, and if anyone takes what belongs to you, do not demand it back.



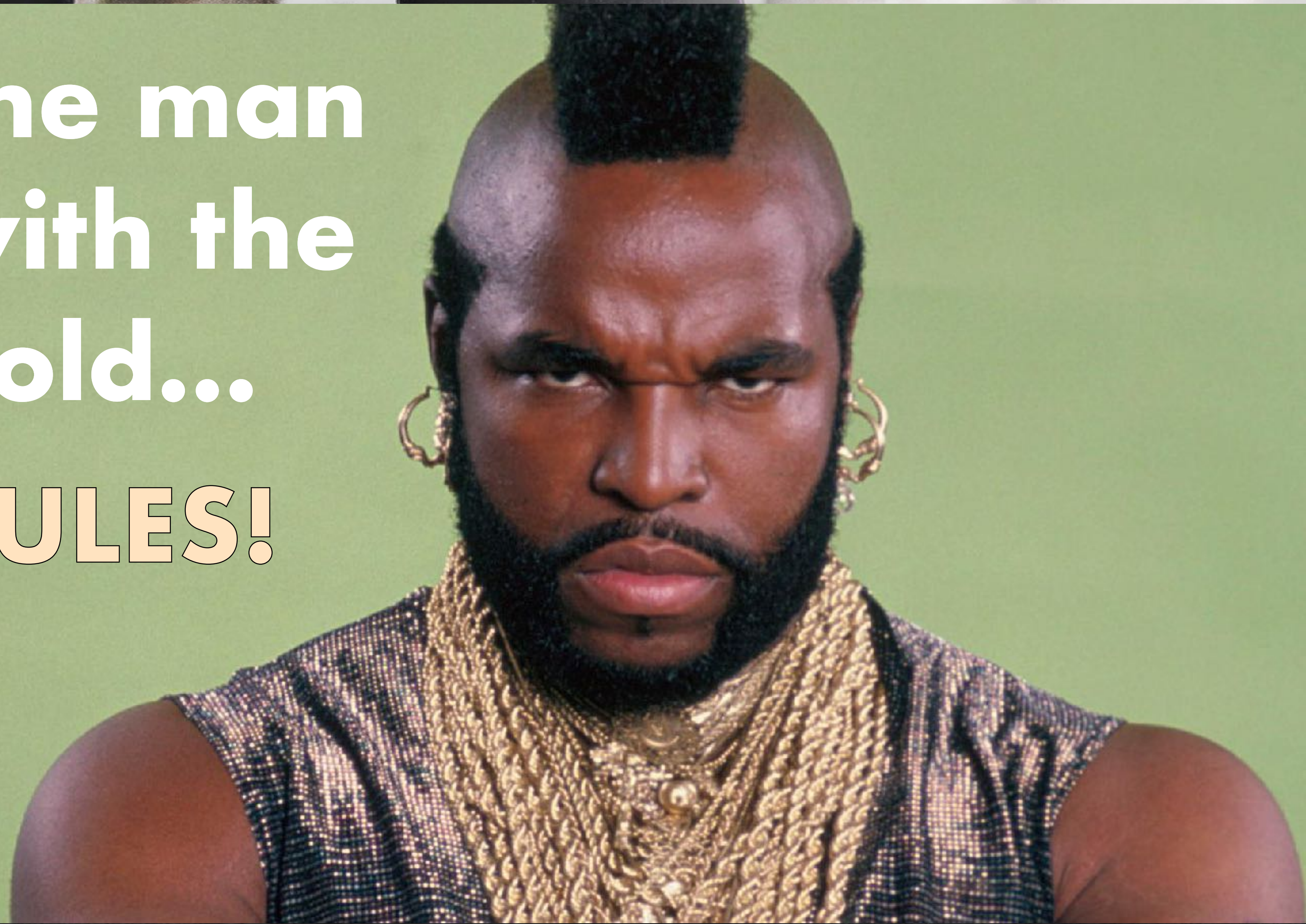
Luke 6:27-31

³¹ Do to others as you would have them do to you.

**The man
with the
gold...**



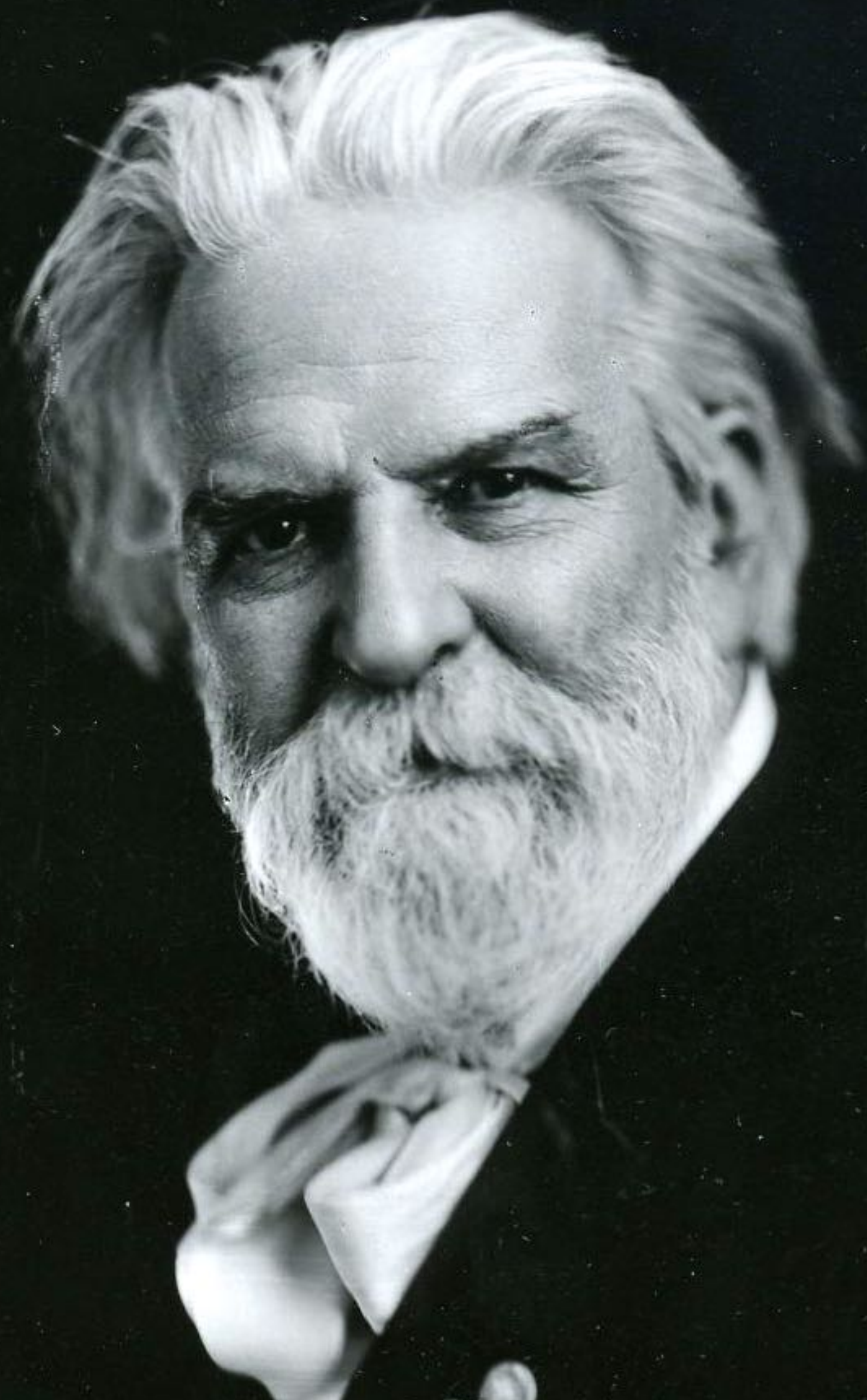
**The man
with the
gold...
RULES!**



**Do unto your
children as
you wish
your parents
had done
unto you.**



**Let us now
commit it
to life.**



Luke 6:27-31

²⁷ “But **to you who are listening** I say:
Love your enemies, do good to those
who hate you, ²⁸ bless those who curse
you, pray for those who mistreat you.

Luke 6:27-31

²⁷ “But to you who are listening I say: **Love** your enemies, do good to those who hate you, ²⁸ bless those who curse you, pray for those who mistreat you.

Luke 6:27-31

²⁷ “But to you who are listening I say: **Love** your enemies, **do good** to those who hate you, ²⁸ bless those who curse you, pray for those who mistreat you.

Luke 6:27-31

²⁷ “But to you who are listening I say:
Love your enemies, **do good** to those
who hate you, ²⁸ **bless** those who curse
you, pray for those who mistreat you.

Luke 6:27-31

²⁷ “But to you who are listening I say:
Love your enemies, **do good** to those
who hate you, ²⁸ **bless** those who curse
you, **pray** for those who mistreat you.

Luke 6:27-31

²⁷ “But to you who are listening I say:
Love your enemies, **do good** to those
who hate you, ²⁸ **bless** those who curse
you, **pray** for those who mistreat you.

Luke 6:27-31

²⁹ **If someone slaps** you on one cheek, turn to them the other also. If someone takes your coat, do not withhold your shirt from them. ³⁰ Give to everyone who asks you, and if anyone takes what belongs to you, do not demand it back.

Luke 6:27-31

29 If someone slaps you on one cheek, turn to them the other also. If someone takes your coat, do not withhold your shirt from them. 30 Give to everyone who asks you, and if anyone takes what belongs to you, do not demand it back.



Les Miserables clip here
<https://www.youtube.com/watch?v=wF3FX43F-7Y>



Luke 6:27-31

³¹ Do to others as you would have them do to you.


Luke 6:27-31

31 Do to others as you would have them do to you.

“You can give without loving, but you cannot love without giving.” —Amy Carmichael



EYES ON THE PRIZE



MLK clip here

<https://www.youtube.com/watch?v=NNPryUk9H4c#action=share>

A low-angle, close-up shot of a person's legs from the knees down, standing on a wet, reflective pavement at night. The person is wearing dark blue denim jeans and black sneakers with white soles. The background is heavily blurred, showing out-of-focus city lights and the lower legs of other people, creating a bokeh effect. A semi-transparent dark blue rectangular overlay covers the middle portion of the image, serving as a background for the text.

Are you listening?



Are you listening?
Live differently



Are you listening?
Live differently
Love supernaturally







A low-angle, close-up shot of a person's legs from the knees down, standing on a dark, textured surface like asphalt. They are wearing dark blue denim jeans and black sneakers with white soles. The background is heavily blurred, showing out-of-focus city lights and possibly other people, creating a bokeh effect. A semi-transparent dark grey rectangular box is overlaid across the middle of the image, containing the text "Are you listening?".

Are you listening?



**Are you listening?
Live differently**



Are you listening?
Live differently
Love supernaturally

Luke 6:32-36

³²“If you love those who love you, what credit is that to you? **Even sinners** love those who love them. ³³And if you do good to those who are good to you, what credit is that to you? **Even sinners** do that.

Luke 6:32-36

³⁴ And if you lend to those from whom you expect repayment, what credit is that to you? **Even sinners** lend to sinners, expecting to be repaid in full. ³⁵ But love your enemies, do good to them, and lend to them without expecting to get anything back.

Luke 6:32-36

Then your reward will be great, and you will be children of the Most High, because he is kind to the ungrateful and wicked. ³⁶ Be merciful, just as your Father is merciful.



Luke 6:27-31

²⁷ “But to you who are listening I say:
Love your enemies, **do good** to those
who hate you, ²⁸ **bless** those who curse
you, **pray** for those who mistreat you.

Draw Near

POST

TEST



Draw Near

#1

I am listening to God and ready to follow his leadership.



Draw Near

#2

**I will practice praying for my enemies or
for those who annoy me.**



Draw Near

#3

**I will surrender to God and ask him to
live through me.**



Draw Near

#4

I want to live differently and love supernaturally.



Draw Near
Pray Counterintuitively